

Rockwood by Forest River

TENT CAMPERS



Roughing it never looked so good.

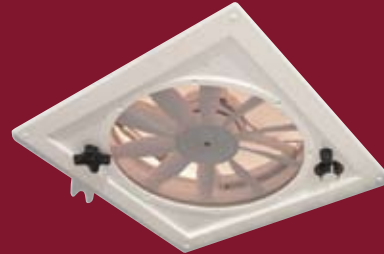
With heated mattress pads, ventilation of a three speed fan and high quality kitchen amenities, roughing it never looked so good.



HEATED MATTRESS PADS
(STD. OPT.)



PLYWOOD BUNK ENDS
(STD.)



3-SPEED FAN
(STD. OPT.)



SPARE TIRE
(STD. WITH PACKAGE B)



WATER PUMP
(STD.)



METAL DRAWER GUIDES



EXTERIOR ELCTRIC PLUG
(STD. WITH PACKAGE B)



**UNDER FLOOR
20 GALLON FRESH
WATER TANK**
(STD. EXCEPT LTD.)



ONE-PIECE DOOR
(STD. EXCEPT LTD.)



FREEDOM

TENT CAMPERS



PREMIER TENT CAMPERS



It's Premier for a reason.

Premier offers the top shelf amenities you would expect in a tent camper. Special care was taken with every feature to make your camping experience enjoyable.



**OUTSIDE SHOWER WITH
WATER FILTRATION SYSTEM**
(STD. ON PREMIERS)



HANGING SHIRT BAR
(STD. ON PREMIERS)



PORT-A-POTTY
(STD. IN SELECTED FLOORPLANS)



BUNK LIGHT & FAN
(STD. ON PREMIER)



CRANK JACKS WITH SAND PADS
(STD. ON ALL MODELS)



SLIDING STORAGE TRUNK



Bringing travel trailer luxury to tent campers.

Rockwood's high wall tent campers close the gap between travel trailers and tent campers. Standard features such as large refrigerators, oven with a 3 burner range, microwave and a large high neck faucet with deep sink makes the high wall campers very attractive.



**POWER LIFT WITH MANUAL OVERRIDE
(OPT.)**



STEREO



**SHOWER
(SOME MODELS)**



HIGH WALL TENT CAMPERS



CONSTRUCTION

ROCKWOOD TENT



CONSTRUCTION FEATURES

- 1) 3 Stage Double Arm Lifter Posts
- 2) Fiberglass Vacuum Bonded Radius Roof w/ No Center Seam
- 3) 5-Piece Vinolon Supreme Tenting
- 4) E-Z Crank Down Stabilizer Jacks w/ Sand Pads
- 5) Full Perimeter Aluminum Bed Frames
- 6) Plywood Bunk Ends
- 7) 7-Way Pigtail Wiring
- 8) Under Floor 20 Gallon Fresh Water Tank (Ltd's 10 Gallon above floor)
- 9) Powder Coated Tubular Steel Frame
- 10) Powder Coated Rafter Poles and Bed Bows
- 11) Air Conditioner Reinforcing Laminated into Roof
- 12) 13" Radial Tires on 12' Models (12" Radial Tires on 8' & 10' Models)
- 13) Easy lube axles
- 14) Smooth Fiberglass Vacuum Bonded Exterior

CAMPERS

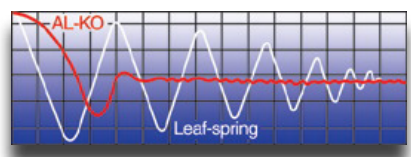


The UltrULube™ Hubs allow you to repack bearings quickly and easily without disassembly.

AL-KO® AXLES AND EASY LUBE HUBS

AL-KO Axles offer many advantages over conventional axles:

- Fully independent wheel suspension.
- No metal to metal contact and no springs, shackles, hangers, or U-bolts to break or wear out.
- Lower trailer center of gravity for improved stability.



Note: Torsion Axles on Premier's only. Easy-Lube Hubs on all units except LTD's.

SPECIAL FEATURES ROCKWOOD TENT CAMPERS



SCREEN ROOM
(OPT.)



HANGING WARDROBE
(OPT.)



HANGING PANTRY
(OPT.)



**EXTERIOR GRILL
WITH WORK TABLE**
(EXCEPT LTD'S.)



BIKE RACK
(OPT.)

HIGH WALL STANDARDS & OPTIONS

STANDARD FEATURES

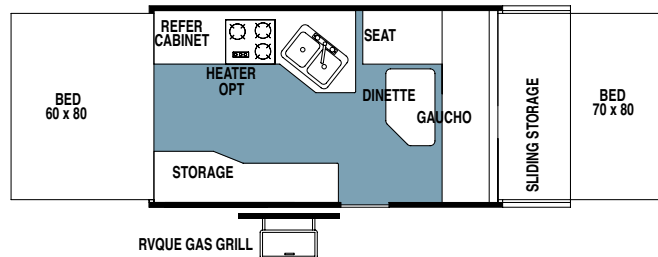
- Double pan sink / with high rise faucet
- 14" tires with aluminum rims
- 3500 LBS torsion axels by AL-KO
- Easy-lube axles
- New exterior graphics
- White interior with wood look" linoleum
- AM/FM stereo with CD player
- TV outlet with cable and satellite hook up
- Three burner stove with oven
- Microwave
- Hot water package (incl. water filter, outside shower, DSI 6 gallon hot water heater, demand water pump)
- Outside shower
- Electric water pump
- Water purifier
- 2- 20 lb. gas bottles
- Diamond plated metal end caps
- Stainless steel appliances and sink
- 6 gallon gray water holding tank
- Laminated floor
- Bunk light with fan
- One-piece screen door
- Electric brakes
- Battery box and wiring kit
- 12v safety switch
- Power lift system

OPTIONS

- 13,500 BTU air conditioner
- Create-a-Breeze 3 speed Fantastic fan
- Heated innerspring mattresses
- 17,000 BTU forced air furnace w/electric ignition
- Screen room
- Awning
- Convenience package (incl. lined privacy curtain, roof valances, patio light, 110 exterior outlet)
- Travel package (incl. spare tire, tire bracket, tire cover, step)



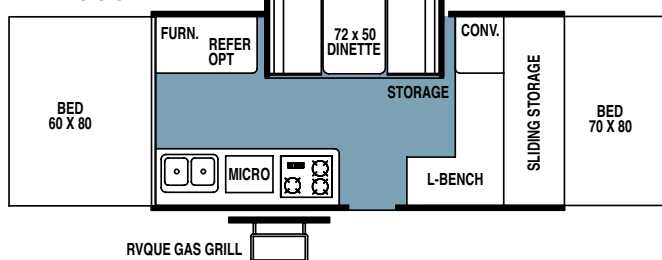
HW252



HW256G



HW258G



MODEL	HW256G	HW258G	HW252
GVWR			
(Gross Vehicle Weight Rating)	3,947	3,917	3844
Base/Dry Unit Weight	2,803	2,853	2808
Base/Dry HitchWeight	447	417	393
Base/Dry Axle Weight	2,356	2,436	2665
Cargo Capacity	940	860	832
Box Size	12'	12'	12'
Trailer size (Closed - with hitch)	18'6"	18'6"	18'6"
Height (Closed)	68"	68"	68"
Trailer length (Open)	22'6"	22'6"	22'6"
Interior height	88"	88"	88"
Travel width	85"	85"	85"

Model number of any particular unit does not necessarily reflect the overall length of the unit itself. Dry weight are estimates.

FREEDOM SERIES STANDARDS & OPTIONS

FREEDOM/LTD SERIES STANDARD FEATURES

- Residential Kitchen Faucet w/ Electric Water Pump
- Soft Quilted-Top Bed Mattresses (4" High Density Foam)
- Outside Gas Grill (Optional on LTD's)
- Water-Pur Filtration System w/ all Shower Models
- Permanently Mounted 3 Burner Indoor Range w/ Range Cover (except Ltd's)
- Converter w/ Built in Battery Charger
- Electric Brakes (12' models)
- Tinted Vinyl Windows
- Fold Over Galley with Upper and Lower Storage
- Exterior Work Table (except Ltd's)
- LP Leak Detector
- Automatic Safety Switch to Turn Off 12 Volt Current when Roof is Closed
- Large Built-In Icebox
- Residential Drawer Guides
- One piece screen door (except LTD's)
- Port-a-Potty in 2290 and 1910 Models

FREEDOM POPULAR EXTRAS

- Create-A-Breeze 3 Speed Fantastic Fan
- Thermostatically Controlled Heated Bed Mattresses
- 17,000 BTU Forced Air Furnace w/ Electric Ignition
- Large 1.9 Cubic Ft. Refrigerator
- A&E Free Standing Awning
- Screen Room
- Option Pkg. A (Incl. Lined Privacy Curtains, Roof Valances, Patio Light, 110 Exterior Outlet)
- Option Pkg. B (Incl. Spare Tire, Tire Bracket, Tire Cover, Step)
- Shower/Cassette Option (model 2280 & 2318G incl. Water Filtration System, 6 Gallon Hot Water Heater, Demand Water Pump, and Cassette Toilet)
- Overhead Kitchen Pantry
- Power Lift System
- Bike Rack
- Air Conditioner Wiring Kit
- Electric Brakes (standard on 12' models)
- Dual 20 Lb. LP Bottles

ROCKWOOD FREEDOM/LTD SERIES

MODEL	1610	1620	1910	1950	1980	2316G	2270	2280	2290	2318G	1640Ltd	1940Ltd
GVWR (Gross VehicleWeight Rating)	2287	2259	2341	2355	2319	3046	2989	2975	3111	3015	2278	2339
Base/Dry Unit Weight	1574	1336	1719	1635	1569	1620	1809	1845	2019	2079	1353	1486
Base/Dry Hitch Weight	187	159	241	255	219	326	269	255	391	295	178	239
Base/Dry Axle Weight	1387	1177	1478	1380	1350	1294	1540	1590	1628	1784	1175	1247
Cargo Capacity	525	735	434	532	562	1238	992	942	904	748	810	738
Box Size	8'	8'	10'	10'	10'	12'	12'	12'	12'	12'	8'	10'
Trailer size (Closed - with hitch)	14'	12'	15'11"	14'	14'	15'11"	15'11"	15'11"	16'6"	15'11"	12'	14'
Height (Closed)	57"	57"	57"	57"	57"	57"	57"	57"	57"	57"	57"	57"
Trailer length (Open)	17'	17'	20'2"	20'2"	20'2"	22'6"	22'6"	22'6"	22'6"	22'6"	17'	20'2"
Interior height	6'6"	6'6"	6'6"	6'6"	6'6"	6'6"	6'6"	6'6"	6'6"	6'6"	6'6"	6'6"
Travel width	85"	85"	85"	85"	85"	85"	85"	85"	85"	85"	85"	85"
Tire Size - 13"R std.	12"	12"	12"	12"	12"	std	std	std	std	std	12"	12"
Power converter with charger: amps	25	25	25	25	25	25	25	25	25	25	12	12

Model number of any particular unit does not necessarily reflect the overall length of the unit itself. Dry weight are estimates.

STANDARD CONSTRUCTION FEATURES

- 3 Stage Double Arm Lifter Posts
- Fiberglass Vacuum Bonded Radius Roof w/ No Center Seam
- 5-Piece Vinolon Supreme Tenting
- E-Z Crank Down Stabilizer Jacks w/ Sand Pads
- Full Perimeter Aluminum Bed Frames
- Plywood Bunk Ends
- 7-Way Pigtail Wiring
- Under Floor 20 Gallon Fresh Water Tank (Ltd's 10 Gallon above floor)
- Powder Coated Tubular Steel Frame
- One Piece Undercoated Structurewood Floor
- Electric Brakes (12' Models)
- Powder Coated Rafter Poles and Bed Bows
- Air Conditioner Reinforcing Laminated into Roof
- 13" Radial Tires on 12' Models (12" Radial Tires on 8' & 10' Models)
- Leaf-spring Axle
- Main Door Operational in Closed Position
- 2,000 lb. Tongue Jack w/ Swivel Wheel
- Easy lube axles
- Seamless, High Density Polyethylene Wheel Wells
- Battery box and wiring kit (Optional on LTD's)

LTD STANDARD FEATURES

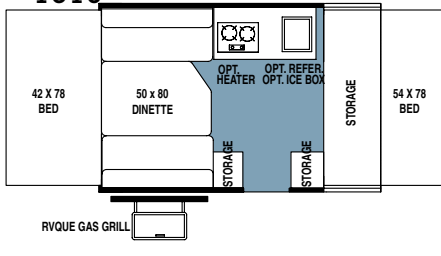
- Spare Tire
- Awning
- Roof Vent
- Privacy Curtains
- Rear Crank Down Stabilizer Jacks w/ Sand Pads
- Outside Recep. (1940 LTD only)
- Patio Light (1940 LTD only)
- Step

LTD POPULAR EXTRAS

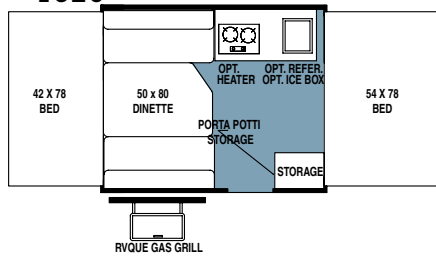
- Thermostatically Controlled Heated Bed Mattresses
- Large 1.9 Cubic Ft. Refrigerator
- 17,000 BTU Forced Air Furnace w/ Electronic Ignition
- Screen Room
- Electric Brakes
- Outside Gas Grill

FREEDOM SERIES FLOORPLANS

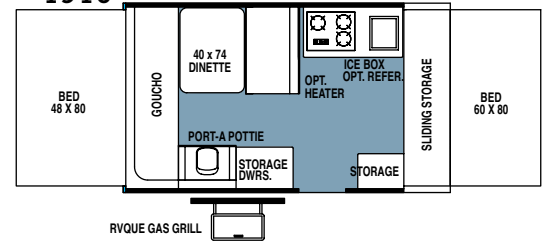
1610



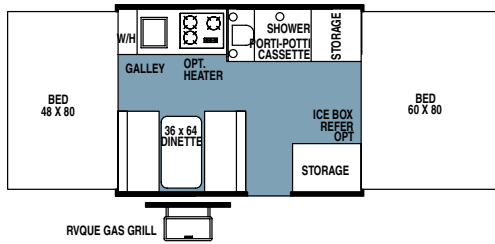
1620



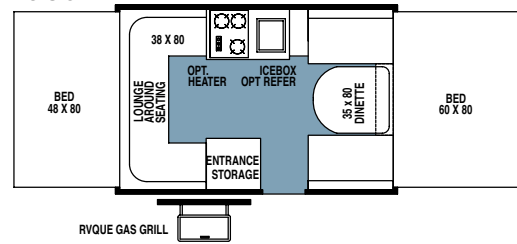
1910



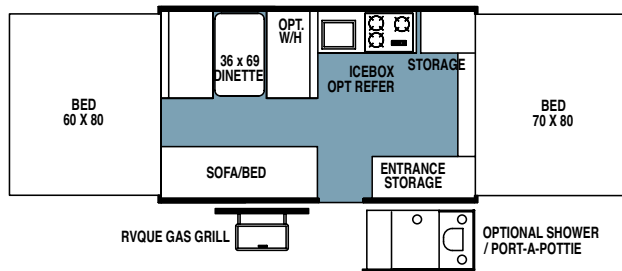
1950



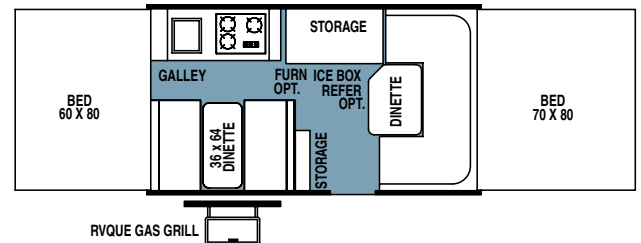
1980



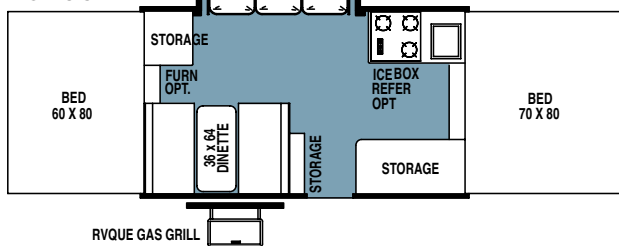
2280



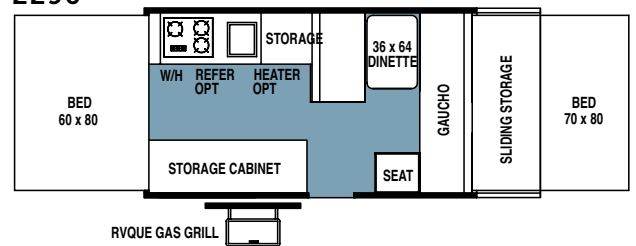
2270



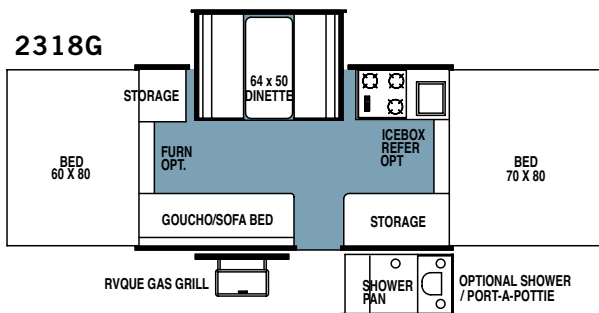
2316G



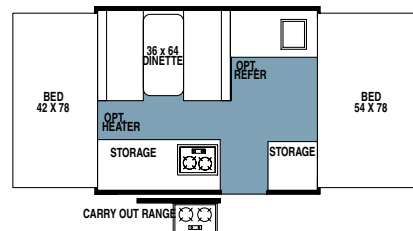
2290



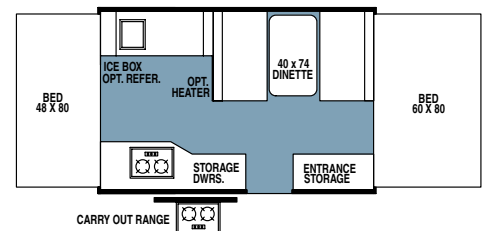
2318G



1640 LTD



1940 LTD



PREMIER SERIES STANDARDS & OPTIONS

PREMIER STANDARD FEATURES

- Residential Style Kitchen Faucet w/ Electric Water Pump
- Larger Deeper Sinks
- Soft Quilted Top Innerspring Mattresses
- Outdoor Gas Grill w/ Worktable
- Sliding Storage Tray on all Front Trunk Models (Except 2405SS & 1904)
- Water-Pur Filtration System
- E-Z Crank-down Stabilizer Jacks w/ Sand Pads
- Electric Brakes (12' models)
- Residential Style Raised Panel Doors
- 3 Double Ceiling Lights w/ Jacks for Accessories
- Bunk Light w/ Fan
- Large Lift Up Galley w/ Backsplash (most models)
- Permanently Mounted 3-Burner Indoor Range w/ Stove Cover
- Free Standing Table – High Pressure Laminate
- Comfortable Family Style Dinette w/ 4" Reversible Cushions
- Large Clothes Bar
- LP Leak Detector
- Port-a-potty 1904 and 2514G models
- Drawer guides
- Hot Water Pkg. – Incl. Water Filter, Outside Shower, 6 Gallon Hot Water Heater, Demand Water Pump

STANDARD CONSTRUCTION FEATURES

- Smooth Fiberglass Vacuum Bonded Exterior
- 3-Stage Double Arm Lifter Posts
- Fiberglass Vacuum Bonded Radius Roof w/ No Center Seam
- 1 Piece Screen Door
- 5 Piece Sectionalized Vinolon Supreme Tenting
- Under Floor 20 Gallon Fresh Water Tank
- Powder Coated Tubular Steel Frame
- One Piece Undercoated Stucturewood Floor
- 13" Radial Tires (12' models)
- 7-Way Pigtail Plug
- Tent Permanently Attached on Bunk Ends and Slide Out
- Full Perimeter Aluminum Bed Frames
- Tinted Vinyl Windows
- Powder Coated Rafter Poles and Bed Bows
- Air Conditioner Reinforcing Laminated into Roof
- Plywood Bunk Ends
- Easy lube axles
- Two tone fabric interiors
- Independent Torsion Axles
- Lower Door Operational in Closed Position
- 2000 lb. Tongue Jack w/ Swivel Wheel
- Seamless, High Density Polyethylene Wells
- Battery box and wiring kitt

PREMIER POPULAR EXTRAS

- Create-A Breeze 3 Speed Fantastic Fan
- Thermostatically Controlled Heated Mattresses
- 17,000 BTU Forced Air Furnace w/ Electric ignition
- Extra-Large 2.5 Cubic Ft. Refrigerator
- Carefree Awning
- Carefree Awning Upgrade
- Screen Room
- Option Pkg. A (Incl. Lined Privacy Curtains, Roof Valances, Patio Light, 110 Exterior Outlet)
- Option Pkg. B (Incl. Spare Tire, Tire Bracket, Tire Cover, Step)
- Overhead Kitchen Pantry
- Hanging Wardrobe
- Bike Rack
- Air Conditioning Wiring Kit
- Electric Brakes (10' models)
- 13" Radial Tires (10' models)
- Dual 20 lb. LP Bottles

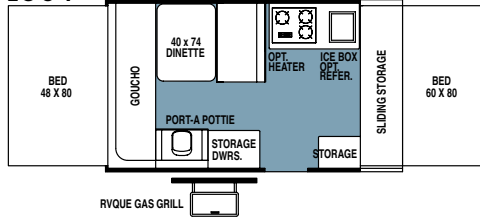
PREMIER WEIGHTS AND CAPACITIES

MODEL	1904	1907	2302	2308	2516G	2514G	2317G	2518G	2405SS	2307	2309
GVWR (Gross VehicleWeight Rating)	2343	2355	3036	3011	3072	3071	3006	3070	3127	3006	3281
Base/Dry Unit Weight	1814	1730	2297	2283	2539	2605	2317	2447	2605	2225	2477
Base/Dry HitchWeight	243	255	316	291	352	351	281	350	407	286	281
Base/Dry Axle Weight	1571	1475	1981	1992	2187	2254	2038	2097	2198	1939	2196
Cargo Capacity	341	437	551	540	345	278	496	435	334	522	568
Box Size	10	10	12	12	12	12	12	12	12	12	12
Trailer size (Closed - with hitch)	15'5"	14	17'11"	17'11"	17'11"	17'11"	17'11"	17'11"	17'11"	17'11"	17'11"
Height (Closed)	57"	57"	61"	61"	61"	61"	61"	61"	61"	61"	61"
Trailer length (Open)	20'2"	20'2"	23'6"	23'6"	23'6"	23'6"	23'6"	23'6"	23'6"	23'6"	23'6"
Interior height	6'6"	6'6"	6'6"	6'6"	6'6"	6'6"	6'6"	6'6"	6'6"	6'6"	6'6"
Travel width	85"	85"	85"	85"	85"	85"	85"	85"	85"	85"	85"
Tire Size - 13"R std.	12"	12"	STD.	STD.	STD.	STD.	STD.	STD.	STD.	STD.	STD.
Power converter with charger: amps	25	25	25	25	25	25	25	25	25	25	25

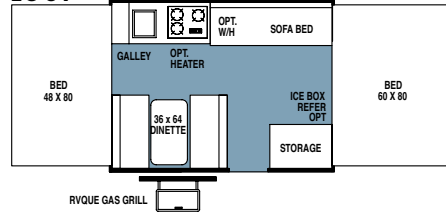
Model number of any particular unit does not necessarily reflect the overall length of the unit itself. Dry weight are estimates.

PREMIER SERIES FLOORPLANS

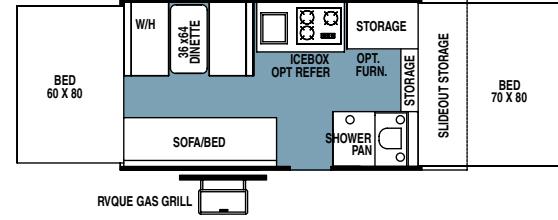
1904



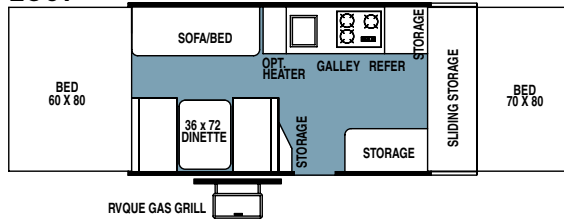
1907



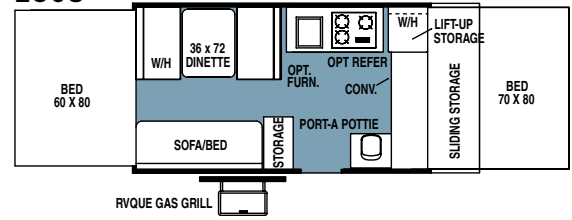
2302



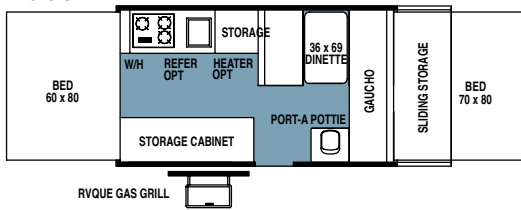
2307



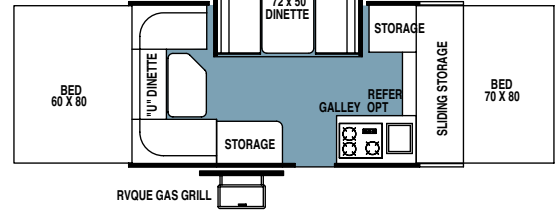
2308



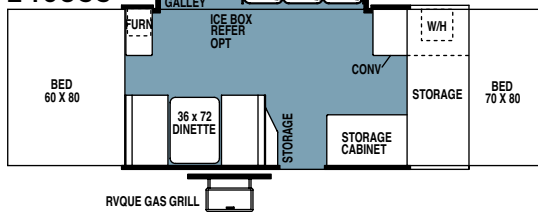
2309



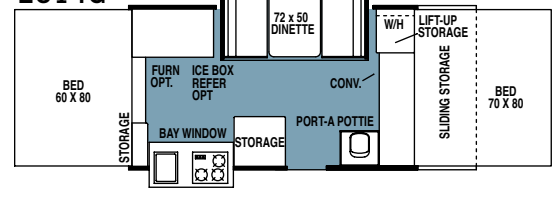
2317G



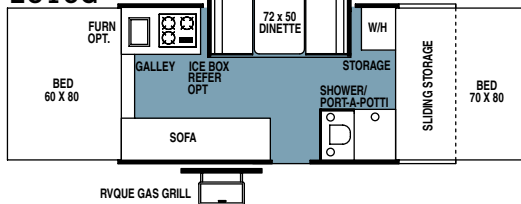
2405SS



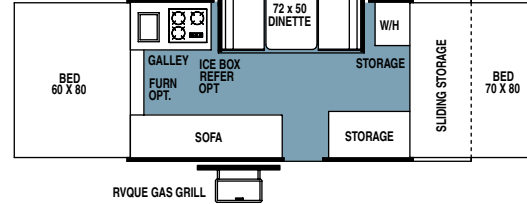
2514G

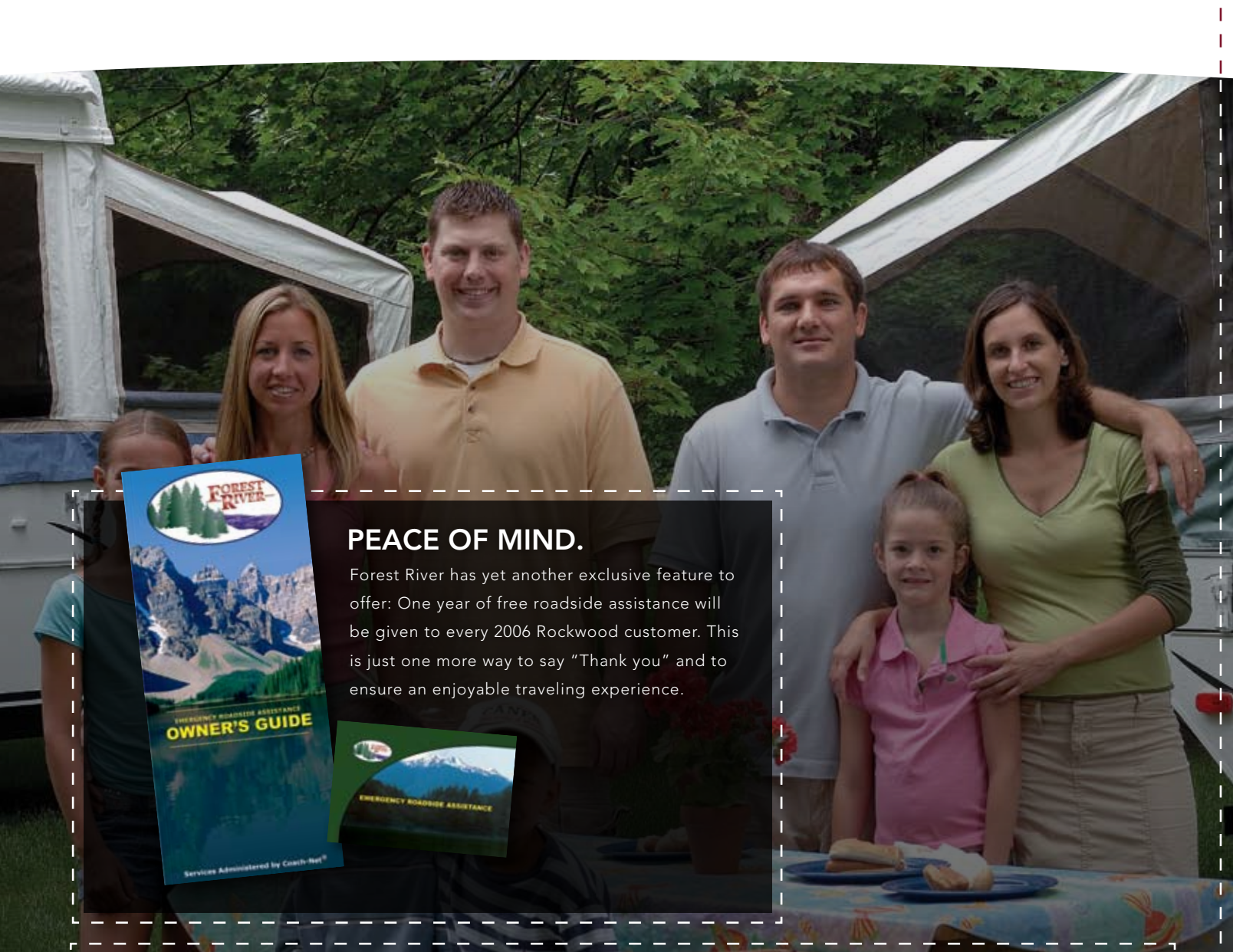


2516G



2518G





PEACE OF MIND.

Forest River has yet another exclusive feature to offer: One year of free roadside assistance will be given to every 2006 Rockwood customer. This is just one more way to say "Thank you" and to ensure an enjoyable traveling experience.



YOUR ROCKWOOD DEALER

For details on Rockwood's complete warranty program, see your Rockwood dealer. When it comes to backing products with the same quality and commitment it does when it begins the manufacturing process, the only name you have to remember when you're looking for a recreational vehicle is Rockwood.

Rockwood offers the following additional limited warranties to the original purchasers. Consult written warranty for details.

- 1. Five-year roof warranty, 2. Twenty-five-year floor warranty,
- 3. Five-year frame warranty, 4. Five-year tent warranty, 5. Five-year warranty on torsion axle suspension, 6. Limited life-time warranty of lifter system,
- 7. One-year bumper to bumper

Ask your dealer about the available lifetime structural warranty.

All specifications contained herein are based on the latest product information at time of printing. Forest River reserves the right to make changes in colors, materials, equipment and specifications at any time without notice and assumes no responsibility for any errors in this brochure.



Forest River, Inc. 55470 C.R. 1 Elkhart, IN 46515
574.389.4600 www.forestriverinc.com www.forestriveraccessories.com